



LCT.TK

GENERAL OPERATION MANUAL

OPERATION MANUAL

RETRACTABLE STOCK Battery Installation

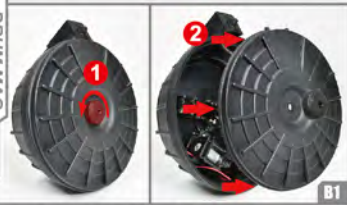


Please choose suitable batteries based on the stock tube space to prevent any damage.

Battery Installation



DRUM MAG Load BBS



Loose the fixing screw to open the butt plate.



PK403/381 Operation Video

Load / Unload Magazine



C1: Insert a magazine into the magwell until set firmly.
C2: Press the release button for unloading.



Tilt the magazine and align the front inner lug with the magazine socket hook.(Show as red circles)

Let a magazine be attached with the magazine release lever (step 2) until set firmly.

Hold the magazine, push the magazine release lever(A) or press the button(B) for unloading.



Tilt the magazine and align the front inner lug with the magazine socket hook.(Show as red circles)

Let a magazine be attached with the magazine release lever (step 2) until set firmly.

Hold the magazine, push the magazine release lever(step 1) for unloading.

MAGAZINE Load BBS



Using a BB loader(excluded) to fill in the mid-cap magazine.

Please use LCT high precision/ BIO BBS.



Open the magazine top lid and fill in BBs. Make sure the cover firmly closed before winding. Wind the spring ratchet (One way) at the bottom of magazine until hearing crackling sound.

Muzzle Thread Adapter Installation



Remove the flash hider and be aware of the pin popping out.

Insert the PK404 thread adapter.

Rotate it to align with the locking pin of the flash hider.

Secure the screw from the bottom.

PK404 Installation Guide Video



ZPT-1 / ZPT-3 Installation Guide Video

CHECK THE VIDEO FIRST!

UNFOLD ZPT-1 / 3 STOCK



DO NOT unfold the stock before pressing down the locking latch.

Keep pressing the locking latch and unfolding the stock at same time.

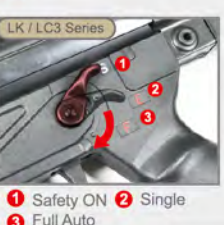
Fire Selector



1 Safety ON 2 Full Auto 3 Single

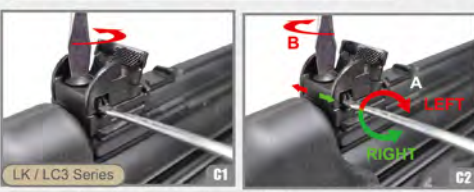


1 Safety ON 2 Single 3 Full Auto



1 Safety ON 2 Single 3 Full Auto

Windage Adjustment



Loosen clamping screw on top of sight base.

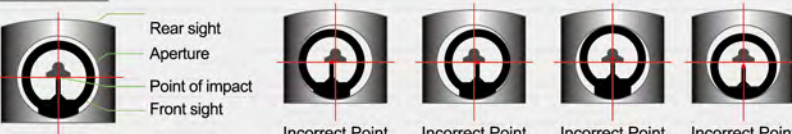
Turn adjusting screw(A) on the right side according to requirement. The clamping screw(B) should be secured after adjustment.

Apertures Selection



Rotate sight cylinder in desired direction by hand; (to lower point of impact turn clockwise, to raise point of impact turn counter-clockwise.)

Sight pictures



Correct Point of Aim

Incorrect Point LEFT

Incorrect Point RIGHT

Incorrect Point HIGH

Incorrect Point LOW

Retractable Stock



Pulling the Stock adjustment lever, make the stock fully expanded or collapsed.

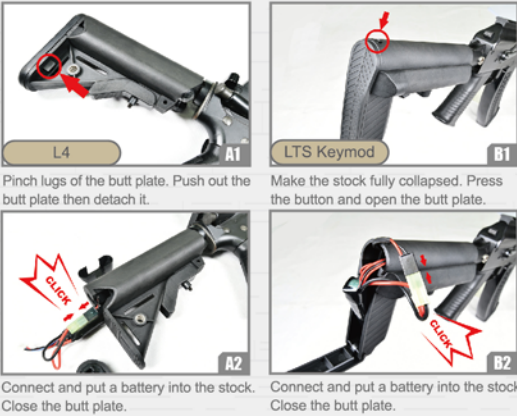


Non-locking

It should be without any gap while the stock been fully collapsed.

OPERATION MANUAL

RETRACTABLE STOCK Battery Installation



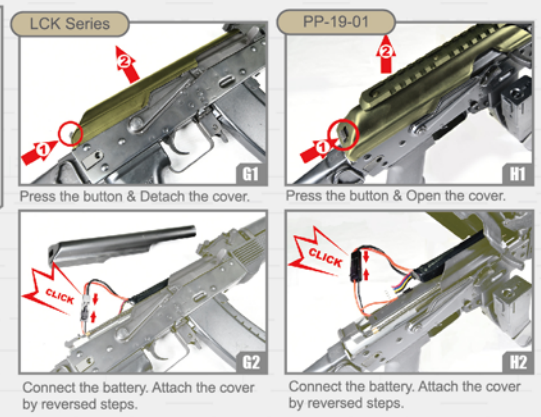
HANDGUARD Battery Installation



FIXED STOCK Battery Installation



COVER Battery Installation



WARNING! Please use the most suitable battery for the available space to prevent short circuits or other unacceptable damage.

LEFT Folding Stock



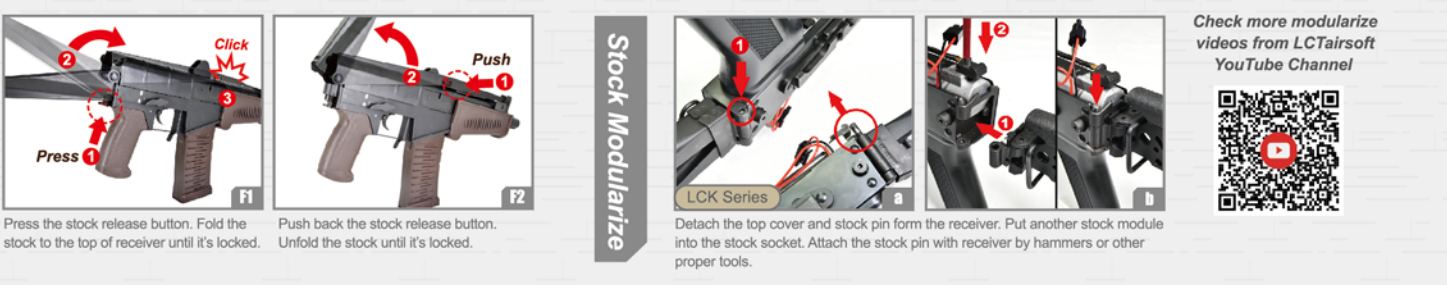
RIGHT Folding Stock



BOTTOM Retractable Stock



TOP Stock Modularize



Check more modularize videos from LCTairssoft YouTube Channel

NOTICE!

Check following operation videos **FIRST** before unfolding the stock.
LCT may refuse to provide product warranty service due to any personal error.
展開槍托前，請務必觀看操作影片。因個人操作失誤導致損壞，LCT可拒絕提供保固服務。

LCK-12/LCK-15/LCK-16 ZK-12/ZK-12U	LPPK-20/ LCK-19/ PK409	ZKS-74M/ ZK-104/ZP-19-01 ZKS-74UN/ZPT-1/ZPT-3	PK340/PK380	LGM VAL/ G-03/G03M G04/G04M/PK414/PK063
Operation Video	Operation Video	Operation Video	Operation Video	Operation Video

WARNING All products are owned or operated by adult(18 years old and above) only. Please DO NOT make any internal modification in purpose. The Muzzle Velocity is according to the local regulation.

0.8J -- 90m/s (296FPS) 1.4J --120m/s (395FPS)
1.0J --100m/s (329FPS) with 0.2g 6mm BB.

The muzzle velocity of airsoft is 0.8 Joule (90 m/s, 296 FPS) or 1.0 Joule (100m/s, 329 FPS) or 1.4 Joule (120m/s, 395 FPS) or customize edition 1.8 Joule (135 m/s, 444 FPS).
The actual velocity is different between countries, and strictly follows the countries' law requirement as accordingly.